



Power your  
**Solar** with  
unmatched value!



Quick  
Resolution



Universal  
Support



Nationwide  
Coverage



Cost-  
efficient



Comprehensive  
Solutions

# GW Rack

---

As the global leader in solar permit design, we bring our expertise to the solar rack market, offering a minimal, yet highly effective, range of products engineered for seamless installation, unparalleled durability, and sustainability.

With GW Racks, you're investing in a solution that delivers unmatched quality, performance, and value for your solar energy systems.

## Short Rack **Metal Roof**



### **RAC S RAIL**

MOC- Alluminum

WIND SPEED-Design Wind Speed 150+ kmph



### **RAC CLIP LOCK-RAIL**

MOC- Alluminum

WIND SPEED-Design Wind Speed 160 kmph



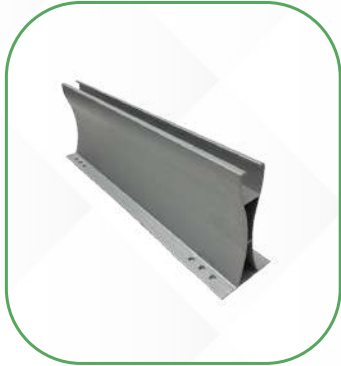
### **RAC NSS-RAIL**

MOC- Alluminum

WIND SPEED-Design Wind Speed 160 kmph

# GW Rack

---



## **RAC VLS RAIL**

MOC-Alluminum

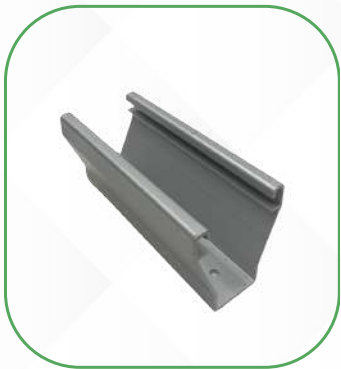
WIND SPEED-Design Wind Speed 150+ kmph



## **RAC KALZIP-RAIL**

MOC-Alluminum

WIND SPEED-Design Wind Speed 160 kmph



## **RAC Cup Rail**

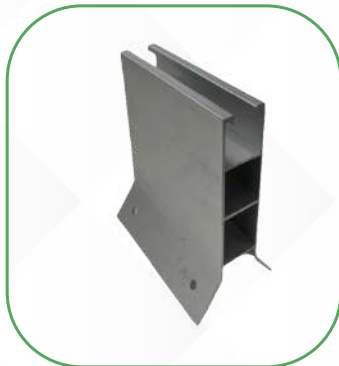
MOC-Alluminum

WIND SPEED-Design Wind Speed 160 kmph



# GW Rack

---



## **RAC Y RAIL**

MOC- Alluminum

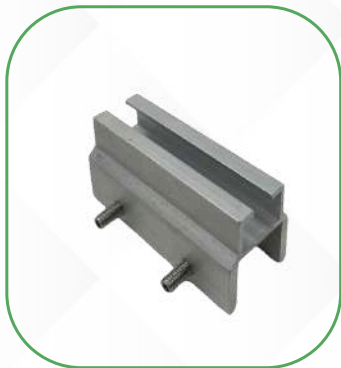
WIND SPEED-Design Wind Speed 150+ kmph



## **RAC ML100**

MOC- Alluminum

WIND SPEED-Design Wind Speed 170 kmph



## **RAC DSS-RAIL(TBC Ritesh)**

MOC- Alluminum

WIND SPEED-Design Wind Speed 160 kmph



# GW Rack

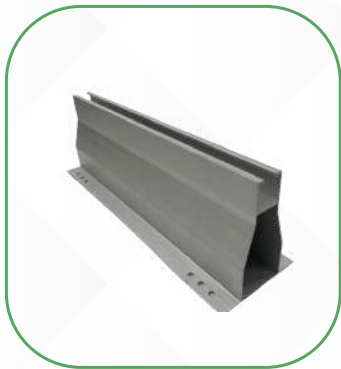
---



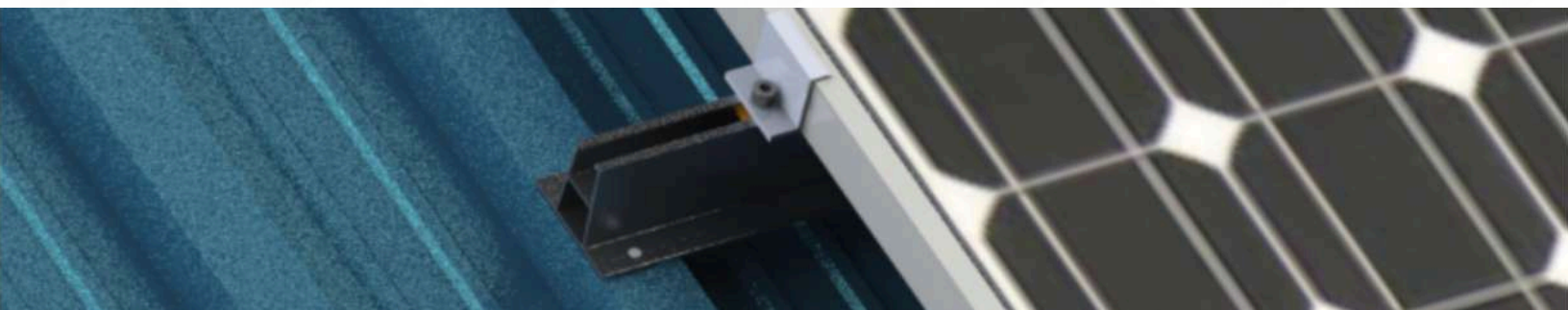
**RAC NSS-RAIL**  
MOC-Alluminum  
WIND SPEED- Design Wind Speed 160 kmph



**RAC NSS-RAIL**  
MOC-Alluminum  
WIND SPEED- Design Wind Speed 160 kmph



**RAC VLD100-RAIL**  
MOC - Aluminium  
WIND SPEED - Design Wind Speed 170 kmph



# GW Rack

---

## Components for Assembly of Rail Structure



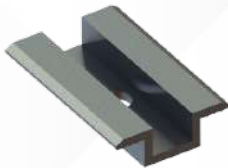
**End Clamp**



**Rail Nut**



**Rivets**



**Rivets**



**Spring Nut**



**Mid Clamp**



**Aline Bolt**



**Spring Washer**



**Spring Nut**

# GW Rack

---



## **RAC SL80-FULL RAIL**

MOC-Alluminum

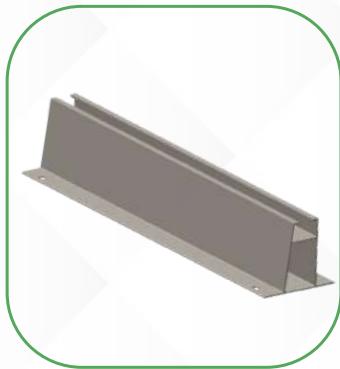
WIND SPEED- Design Wind Speed 160 kmph



## **RAC DPTI**

MOC-Alluminum

WIND SPEED- Design Wind Speed 160 kmph



## **RAC VM-RAIL**

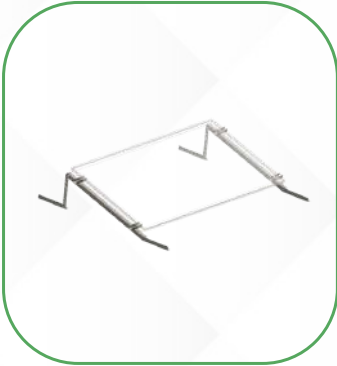
MOC - Aluminium

WIND SPEED - Design Wind Speed 170 kmph



# GW Rack

---



## **RAC IRIS BALLAST STRUCTURE**

MOC-üMS HDGI

WIND SPEED- Design Wind Speed 150 kmph



## **RAC SPTS FULL RAIL STRUCTURE**

MOC-Alluminum & HDGI

WIND SPEED- Design Wind Speed 150 kmph



## **RAC RCC ROOF BALLAST TYPE STRUCTURE**

MOC - Aluminium

WIND SPEED - Design Wind Speed 160 kmph





# GW Rack

---



**RAC DPTI WITH BALLAST**

MOC-üMS HDGI

WIND SPEED- Design Wind Speed 160 kmph





## Contact Us



**Operation Office** - Tower 8, C 101 - C 106, CBD Belapur RSC. IND

**Maryland:** 4408 Ritchie Hwy, MD 21225, USA

**Florida:** 6801 Lake worth Road, Suite no. 302, Greenacres, FL 33467, USA



[arjun@greenworld-energy.com](mailto:arjun@greenworld-energy.com)

[jaideep@greenworld-energy.com](mailto:jaideep@greenworld-energy.com)



+1(443)478-4297/ +91 80971 98616

+1-443-681-3040/ +91 9820953424